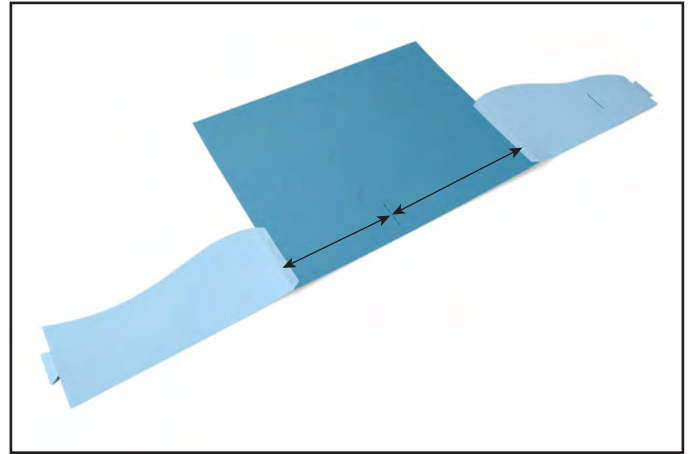
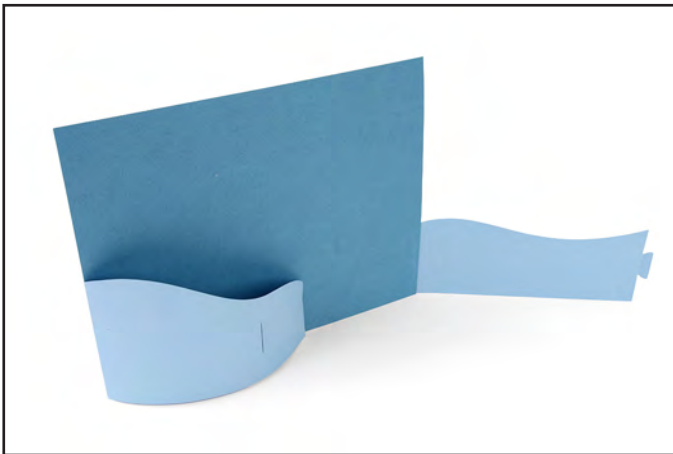


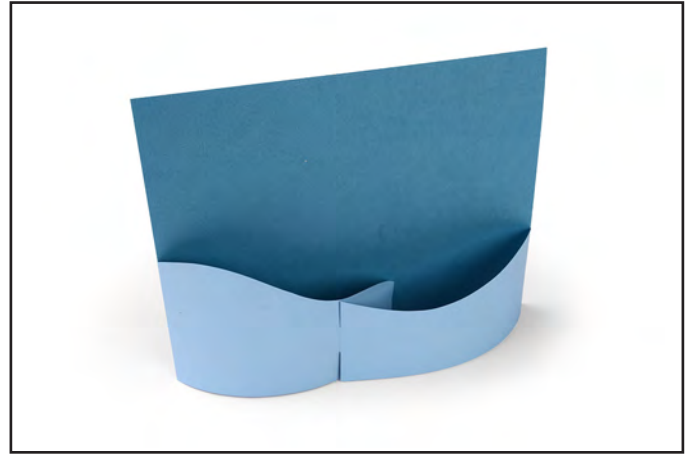
1. Die-cut from heavy cardstock.



2. Adhere tabs of each of the arms to the back of the Card base with the flat edges of the arms aligned with the bottom of the Card base. The short arm should be on the side farthest away from the slit in the Card base.



3. Fold the arms around to the front of the Card and insert the tab at the end of the short arm into the front of the Card base.



4. Insert the tab at the end of the long arm into the slit on the short arm.