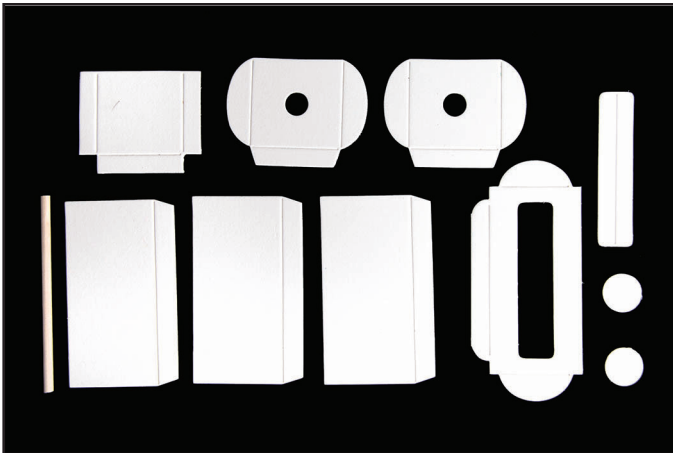




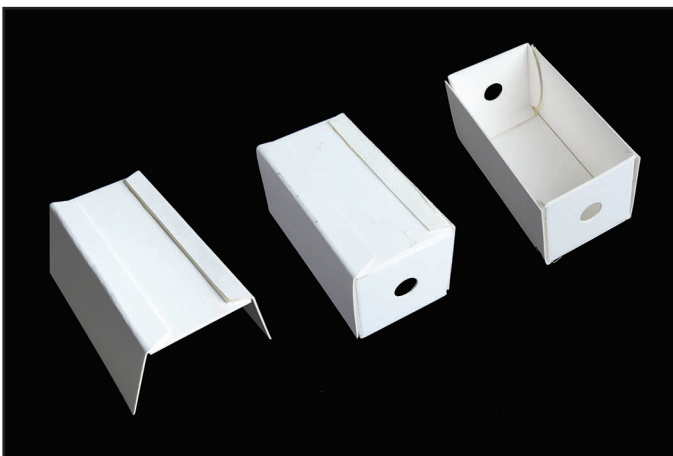
## 662823 Sizzix® Bigz™ L Die - Washi Tape Box by Courtney Chilson



1. Die-cut the Washi Tape Box pieces out of mat board or heavy cardstock. The hinge may be cut out of a flexible material such as foam.



2. Create the box bottom by removing the long tab from one of the side pieces.



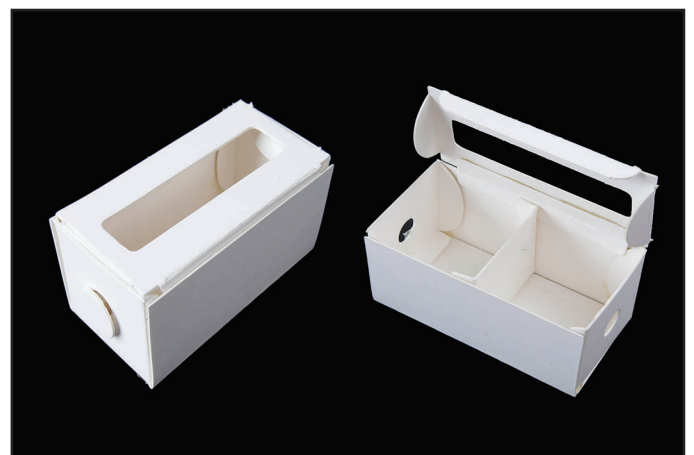
3. Adhere two side pieces to the prepared bottom piece. Adhere the end pieces to the bottom and sides.



4. Adhere the hinge to the top and one of the sides.



5. Trim a piece of dowel to 1/8" longer than the length of the box. Adhere one of the circle die-cuts to one end. Insert the opposite end of the dowel into the hole on one of the sides, through rolls of washi tape and out the other end of the box. Adhere a circle die-cut to the open end of the dowel to secure in place.



6. A divider piece is also provided so that the dispenser can be used as an organizer.